

# Turbo-IR water meter

## Turbo-IR water meter

**Bermad** Turbo IR water meters have been specially designed for applications in clean water and water containing dirt up to a certain percentage. This percentage depends upon the type of dirt in the water. The Turbo IR meter uses a multi-bladed plastic impeller fitted at the top of the water flow for measuring. In this position, the disruption due to solids in the water is minimised, meaning that an accurate measurement is possible. The Turbo IR water meter is a wear-resistant and easy-to-maintain product.

### Product features:

- Magnetically coupled drive fully separated from the flowing water
- Dry register, airtight and turning 360°
- Low pressure loss
- Interchangeable register

The Turbo-IR water meter is available with 2 different registers:

### Electronic register Turbo-IR-E:

- Digital display
- Flow direction display
- Flow display
- Measures flow in two directions:
  - forwards min backwards
- Battery life at least 10 year
- 2 pulse outputs (3 wires)
- Fast pulse
- Leak detection

### Mechanical register Turbo-IR-M:

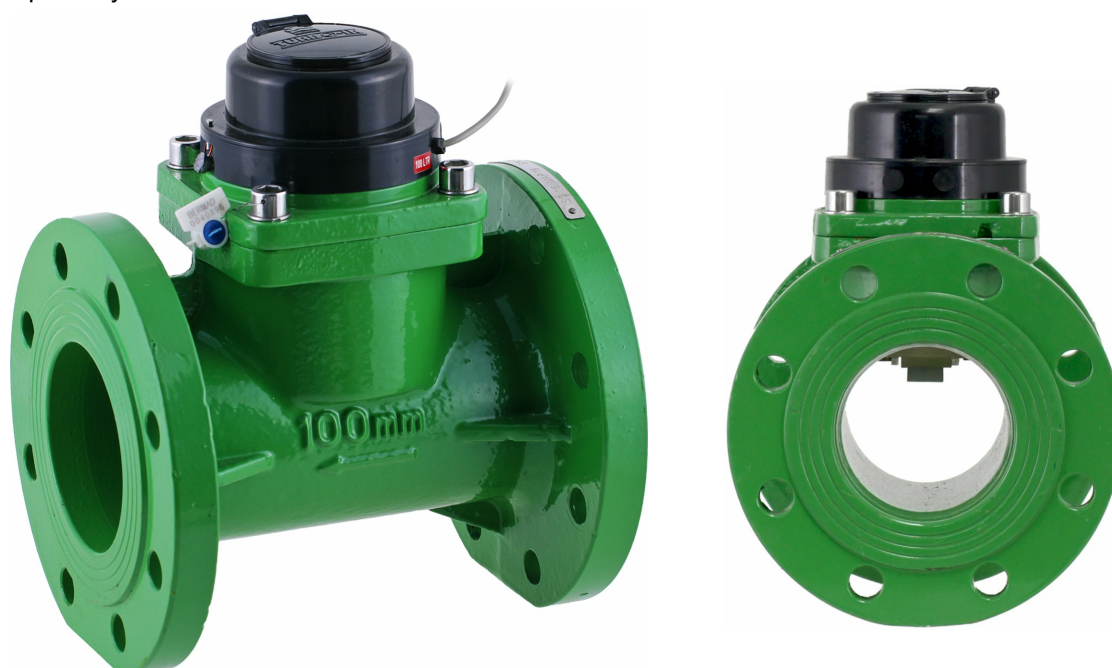
- Analogous counters
- Flow display
- Leak indicator
- 1 pulse (reed switch)

### Options:

- without pulse (reed switch)

### Options:

- WiFi
- Measures flow only forwards
- Measures flow forwards and backwards separately





# Turbo IR water meter

## Technical data

### Specifications:

- Sizes: 2" - 12"; DN50 - DN300
- Working pressure: 0 - 16 bar
- Max. Temperature: 50 °C
- Connection: ISO flange
- Pressure class: ISO PN16

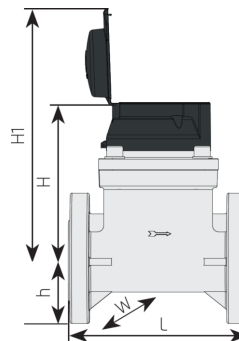
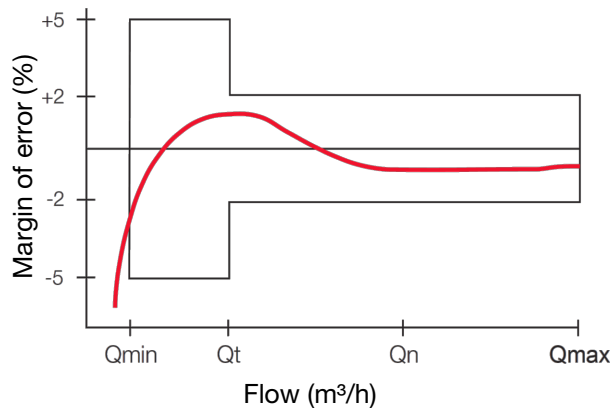
### Materials:

- Body and cover: cast iron with polyester coating
- Register: plastic and glas
- Internal components: plastic and stainless steel

Models		2"	2½"	3"	4"	5"	6"	8"	10"	12"
DN	mm	50	65	80	100	125	150	200	250	300
Nom. capacity Qnom Qn	m³/h	35	50	75	125	175	250	450	600	800
Transitional capacity Qt	m³/h	10,5	15	22,5	37,5	52,5	75	135	180	240
Min. capacity Qmin	m³/h	2,8	4	6	10	14	20	35	48	64
Max. capacity peak Qmax	m³/h	70	100	150	250	350	500	900	1200	1600
Flange ISO PN16 bolt circle dia.	mm	125	145	160	180	210	240	295	355	410
Length L	mm	200	200	225	250	250	300	350	450	500
Height H	mm	177	180	185	185	193	198	224	248	274
Height H1	mm	247	250	255	255	263	268	294	318	344
Height h	mm	75	82	95	106	110	135	162	194	220
Width W	mm	125	140	160	180	200	240	295	350	400
Weight	kg	10,5	11,8	15,5	17,5	19,5	30,5	42,5	60,1	82,5
Pulse 1/10 *		E	E	E	E	E				
Pulse 1/100 *		M/E	M/E	M/E	M/E	M/E	E	E	E	E
Pulse 1/1.000 (1/1m³) *		M/E	M/E	M/E	M/E	M/E	M/E	M/E	E	E
Pulse 1/10.000 (1/10m³) *				E	E	E	M/E	M/E	M/E	M/E

\* E = Electronic register  
M = Magnetic register

### Accuracy:



### Electronic register:

- Cable: 3 wires, 1.5m long
- Switch: double
- Switching voltage: 35VDC max.

### Reed switch (magnetic register):

- Cable: 2 wires, 1.5m long
- Switch: single
- Switching voltage: 24V AC/DC max.
- Switching current: 0,01A max.