

### Advantages of the UDI HandiMatic:

The **UDI HandiMatic** filter is a screen filter with a simple cleaning mechanism. This screen filter can be cleaned during the filtration, without opening the filter. The cleaning process takes less than 10 seconds, with a minimum amount of flushing water. In addition, this filter is equipped with a differential pressure indicator, which renders the use of external pressure measurement unnecessary.

### Coating:

In preparation for the coating, the filters are provided with a special layer of zinc phosphate. This treatment ensures proper adhesion of the coating, and protects against rusting-through from the inside.

Subsequently, the polyester coating is applied electrostatically, both internally and externally, before being furnace-hardened. The entire process involves 7 steps, and results in a perfect coating with a thickness of approximately 120 microns.

### Applications:

- All water intakes
- Cooling water systems
- Recirculation systems
- Water transport systems
- After media filters
- Before distribution systems
- Before sprinkler systems

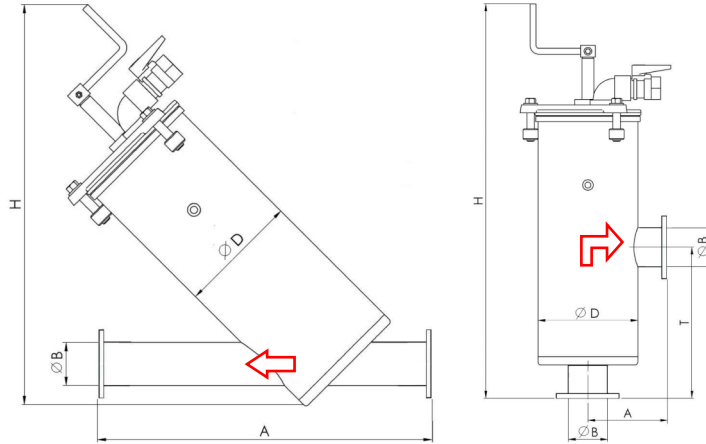


**Model:**

- Angled model
- In-line model
- Parallel model

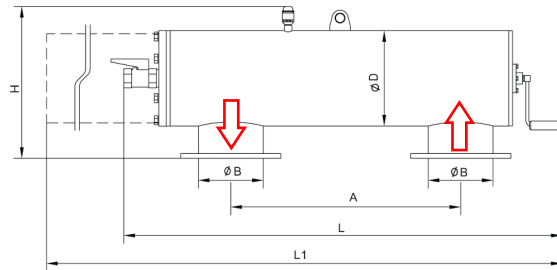
**Materials:**

- Polyester-coated steel
- Neoprene rubbers
- PVC interior elements with stainless steel filter screen  
Perforation: 100, 130, 200, 300, 435, 435, and 800 microns (other perforations upon request)



**Technical specifications:**

- Max pressure: 10 bar
- Working pressure: 8 bar
- Min. flushing pressure: 2 bar
- Max operating temperature: 55°
- Ph 5 - 9 resistant
- Filter screen on the inside of the element



Type	Unit	784102F	784202F	784103F	784203F	784104F	784306F
Model		angled	in-line	angled	in-line	angled	parallel
Connection Ø B	inch	2"	2"	3"	3"	4"	6"
Diameter Ø D	inch	6"	6"	6"	6"	8"	12"
Capacity	m <sup>3</sup> /h	25	25	40	40	80	150
Flange (ISO 7005 PN10)							
Bolt circle diameter C	mm	125	125	160	160	180	240
Bolt holes	mm	4 x Ø18	4 x Ø18	8 x Ø18	8 x Ø18	8 x Ø18	8 x Ø22
Overall length A	mm	-	475	-	555	-	780
H	mm	675	575	675	590	895	570
T	mm	225	-	275	-	400	-
A	mm	139	-	139	-	190	-
L1	mm	-	-	-	-	-	2300
L	mm	-	-	-	-	-	1390
Filter area	cm <sup>2</sup>	1000	1000	1000	1000	2100	4200
Weight	kg	16	17	17	20	32	106
Flushing capacity	m <sup>3</sup> /h	2 - 3	2 - 3	2 - 3	2 - 3	3 - 5,5	10 - 15